

# 14. Северный полюс

**Allegro** ♩=160-176

6

Div.

*ff*

*f*

11

(♩=♩)

*sf*

16

pizz.

3

3

26

3

9

Div.

42

46

50

54

Unis.

arco

59

65 Div.

70 *p* 2 2

77 8 *p*

92 Div. Unis. Div. Unis. *f*

98 Div. Unis.

104

110 pizz. *pp*

116

122 arco *f*

128

134



140



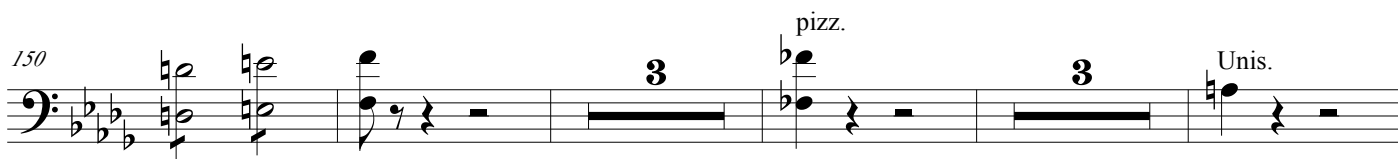
(♩=♩)

**ff**

145



150



pizz.

Unis.

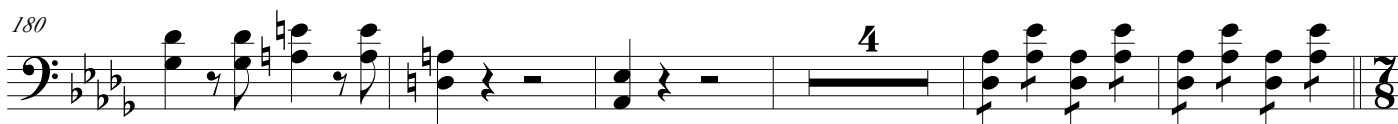
160

Div.  
pizz.**ff**

176



180



(♩=♩)

**ff**

189



193



Unis.

Div.

**p****p****fff**